

# EVENTS

## 2018

**BRIGHTON RACECOURSE**

— ○ EST 1783 ○ —

**SET WITHIN 20 ACRES OF BEAUTIFUL COUNTRYSIDE, WITH STUNNING VIEWS OVER THE CITY & ENGLISH CHANNEL, BRIGHTON RACECOURSE PROVIDES THE PERFECT VENUE FOR ANY EVENT.**



### **WELCOME**

A unique, local and friendly racecourse with some of the best views in the country.

We have a number of versatile suites and boxes to choose from along with picnic lawns and ample outside space, all of which provide stunning views across the Sussex countryside and English coastline - a wonderful backdrop to use for any event. The energy and atmosphere that comes from the venues sporting roots, injects life into any event and leaves guests with an enjoyable and memorable experience long after they leave.





## SITE MAP

- 1. THE WINNING POST SUITE
- 2. THE MARINA SUITE
- 3. THE SUSSEX SUITE
- 4. PAVILION SUITE
- 5. THE QUEENS PARK SUITES
- 6. THE PRINCE REGENT SUITE
- 7. TRACKSIDE PRIVATE SUITES
- 8. MARQUEE
- 9. SILKS RESTAURANT
- 10. OWNERS & TRAINERS BAR
- 11. PARADE RING
- 12. WINNERS' ENCLOSURE
- 13. GRANDSTAND & PADDOCK ENCLOSURE
- 14. WINNING POST
- 15. PREMIER ENCLOSURE LAWN
- 16. WINNERS' SUITE
- 17. RACEDAY ENTRANCE
- 18. RACECOURSE RECEPTION
- 19. RACECOURSE OFFICE

## SEATING CAPACITIES

<b>GRANDSTAND HALL</b>		<b>MARINA</b>		<b>QUEENS PARK II</b>		<b>WEST PIER</b>	
THEATRE	650	THEATRE	36	THEATRE	20	THEATRE	200
EXHIBITIONS (m <sup>2</sup> )	985	EXHIBITIONS (m <sup>2</sup> )	42	EXHIBITIONS (m <sup>2</sup> )	37	BANQUET	200
BANQUET	+400	CLASSROOM	20	CLASSROOM	12	CABARET	100
DINNER	450	U-SHAPE	20	U-SHAPE	12		
CABARET	250	BOARDROOM	20	BOARDROOM	16	<b>EXECUTIVE BOXES</b>	
		DINNER	48	DINNER	16	THEATRE	25
<b>PREMIER HALL</b>		CABARET	40	CABARET	12/25	CLASSROOM	10
THEATRE	200					U-SHAPE	6
EXHIBITIONS (m <sup>2</sup> )	580	<b>CHANNEL</b>		<b>PRINCE REGENT</b>		BOARDROOM	8
BANQUET	200	THEATRE	25	THEATRE	150	CABARET	10*
DINNER	250	EXHIBITIONS (m <sup>2</sup> )	38.5	EXHIBITIONS (m <sup>2</sup> )	265		
CABARET	150	CLASSROOM	16	CLASSROOM	50		
		U-SHAPE	10	BANQUET	120		
<b>SILKS RESTAURANT/SUITE</b>		BOARDROOM	14	DINNER	150		
THEATRE	150	DINNER	24	CABARET	60		
EXHIBITIONS (m <sup>2</sup> )	340	CABARET	30				
CLASSROOM	60			<b>OWNERS &amp; TRAINERS</b>			
U-SHAPE	38	<b>WINNING POST</b>		THEATRE	100		
BOARDROOM	50	THEATRE	64	EXHIBITIONS (m <sup>2</sup> )	100		
BANQUET	1120	EXHIBITIONS (m <sup>2</sup> )	76.5	CLASSROOM	40		
DINNER	150	CLASSROOM	34	U-SHAPE	30		
CABARET	90	U-SHAPE	26	BOARDROOM	40		
		BOARDROOM	40	DINNER	50		
<b>SUSSEX</b>		DINNER	60	CABARET	40		
THEATRE	20	CABARET	50				
EXHIBITIONS (m <sup>2</sup> )	20			<b>THE PADDOCK BOX</b>			
CLASSROOM	20	<b>PAVILION</b>		THEATRE	40		
U-SHAPE	16	THEATRE	50	EXHIBITIONS (m <sup>2</sup> )	70		
BOARDROOM	16	EXHIBITIONS (m <sup>2</sup> )	74.5	CLASSROOM	20		
DINNER	24	CLASSROOM	30	U-SHAPE	18		
CABARET	12	U-SHAPE	18	BOARDROOM	30		
		BOARDROOM	22	CABARET	30		
		DINNER	60				
		CABARET	50				

\* Executive boxes 1-5 have a capacity of 10, box 6 has a capacity of 20.



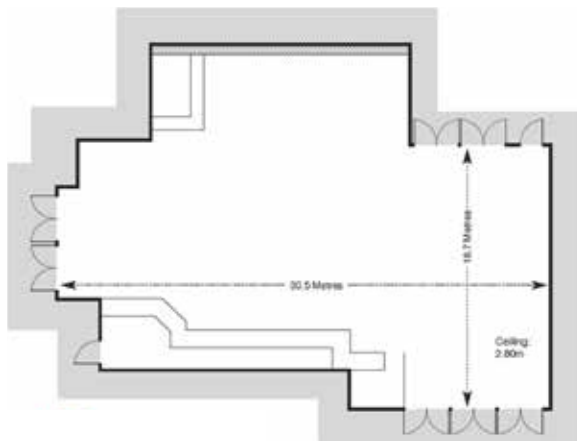


## GRANDSTAND & PREMIER HALLS

These halls are our largest spaces and are very versatile facilities hosting exhibitions, fairs, large parties and everything in between.

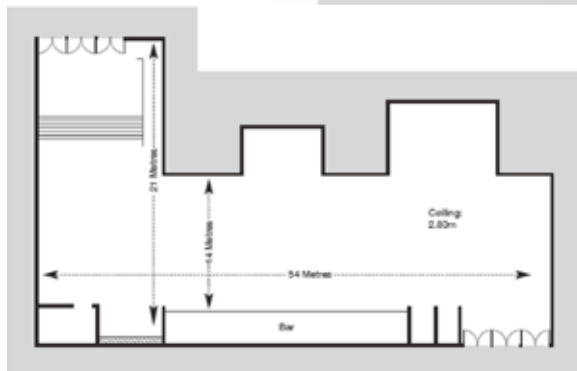
### Key features of both facilities;

- Located on the ground floor
- Easily accessible
- Ramp access
- Male and female toilets
- Café area
- Bars available



Top right: Premier Hall

Bottom right: Grandstand Hall



## WINNING POST, SUSSEX & MARINA SUITES

Our most popular suites suiting a range of uses with prime locations overlooking track, sea and Brighton.

### Winning Post Suite key features;

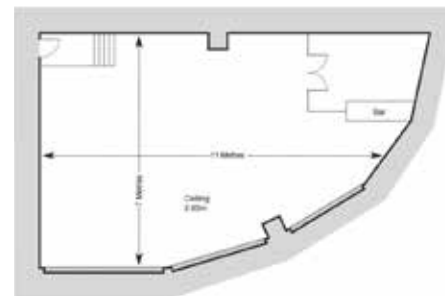
- Accommodate up to 64 theatre style or 60 for dinner
- Overlooking the finish line with its own private entrance
- Private bar and access to shared toilet facilities
- Outstanding 180° views over the winning post, the Sussex coast and Brighton city

### Sussex Suite key features;

- Accommodate up to 20 theatre style
- Situated on the 2nd floor with its own private entrance
- Private bar and access to shared toilet facilities
- Outstanding views of the track and South Downs

### Marina Suite key features;

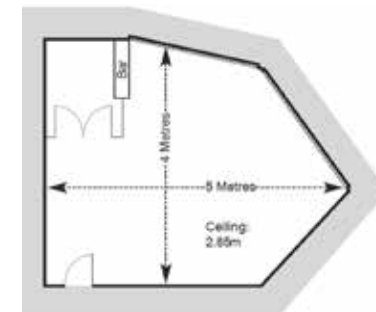
- Accommodate up to 36 theatre style or 48 for dinner
- Situated on the 2nd floor with its own private entrance
- Private bar and access to shared toilet facilities
- Outstanding 180° views over the winning post, the Sussex coast and Brighton city



Top left: Winning Post Suite

Top right: Sussex Suite

Bottom right: Marina Suite





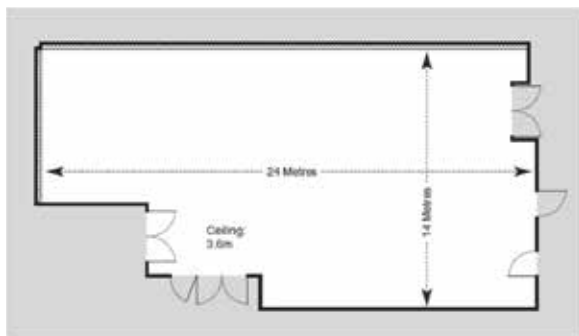
## SILKS RESTAURANT

Our onsite raceday restaurant is available for exclusive hire on non racedays, with a view from the bar that is overlooking the parade ring, the city and the sea. We serve a delicious menu prepared meticulously by our resident chef and his team.

### Key features;

- Located on the 2nd floor of the Premier Hall
- Accommodate up to 150 theatre style or 120 for dinner
- Lift access and toilet facilities
- Private bar
- Access to our coveted open-air Silks Terrace.

This stunning terrace, sat high above the track, is a prime spot to take in the superb view



## PRINCE REGENT & WEST PIER

Our larger rooms located on the 2nd and 3rd floors, both with grandstand access.

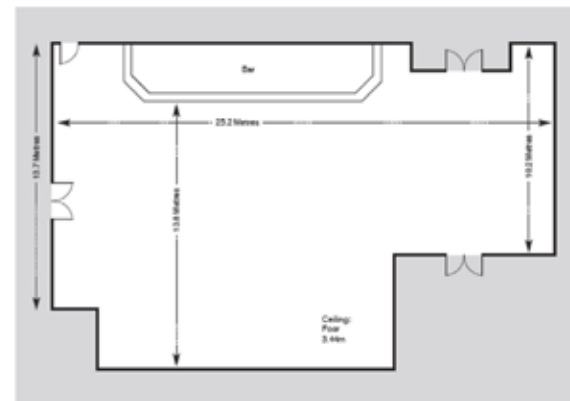
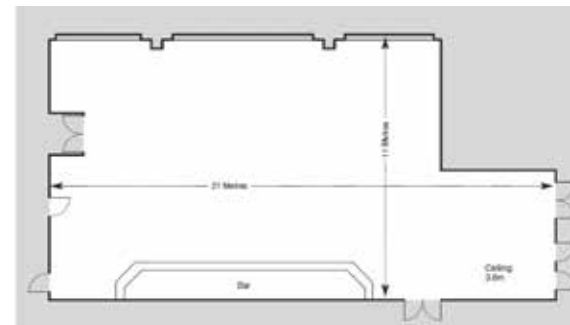
### Prince Regent key features;

- Located on the 3rd floor with lift access
- Direct access to the grandstand terracing
- Private bar
- Accommodate up to 120 guests
- Private toilet facilities
- Ideal space for conferences, weddings, parties and team building

### West Pier key features;

- Located on the 2nd floor with lift access
- Direct access to the grandstand terracing
- Large hall space with silk-draped ceiling
- Accommodate up to 200 guests

Top: Prince Regent, Bottom: West Pier





## TRACKSIDE BOXES

These suites are the perfect space to organise a party and small board meetings.

### Key features;

- Six private trackside boxes available to hire
- Located on the 3rd floor of the grandstand
- Each contain a private bar
- Full height glass sliding doors onto a private balcony with optimal views
- Maximum capacity of 20



## PAVILION & QUEENS PARK II

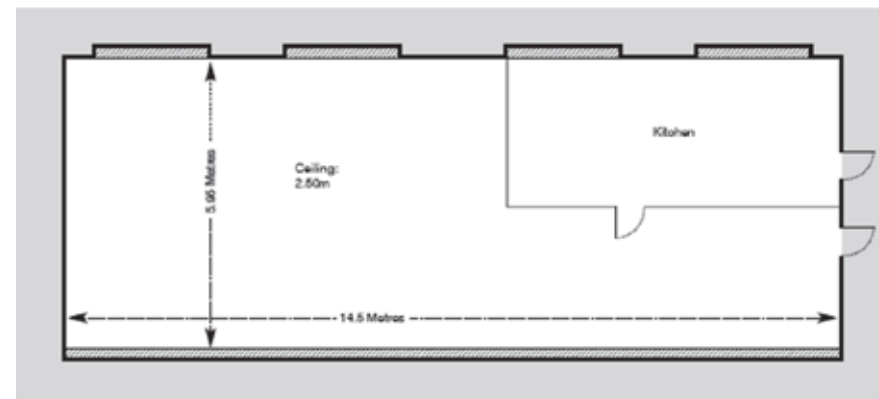
### Pavilion key features;

- Located on the Premier Lawn
- A large suite that has its own private entrance and viewing platform
- Accommodate up to 50 theatre style or 60 for dinner
- Private bar
- Outstanding 180° views over the winning post, the Sussex coast and Brighton city

### Queens Park II key features;

- Located on the Premier Lawn
- A smaller suite that has its own private entrance - perfect for smaller meetings
- Accommodate up to 20 theatre style
- Private bar

### Pavilion





## OWNERS & TRAINERS AND PADDOCK BOX

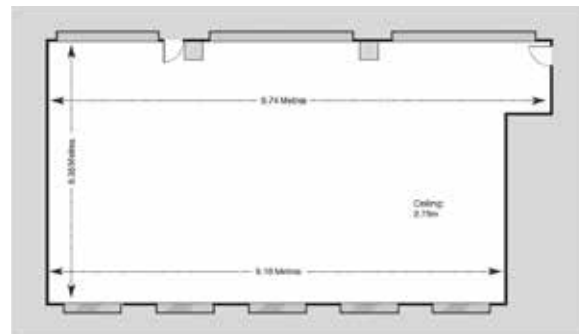
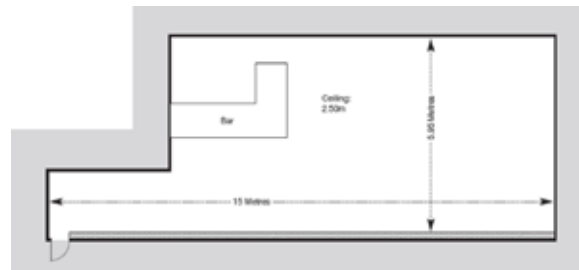
### Owners & Trainers key features;

- A versatile space located on the ground floor
- Private bar
- Private entrance
- Private toilet facilities
- Accommodate up to 100 theatre style, making it ideal for educational programmes

### Paddock Box key features;

- Located on the ground floor
- A smaller room for up to 20 people
- Located beside the Owners & Trainers bar
- Private toilet facilities
- A great talking point as it has its walls lined with memorabilia of times gone by at Brighton Racecourse

Top: Owners & Trainers, Bottom: Paddock Box



## OUTSIDE SPACE

With acres of land set alongside the beautiful Sussex coast, we have the most versatile and flexible outdoor event space in Brighton.

### Key features;

- Free parking for over 600 vehicles on hard standing and grass
- Easy access to the A27 and onto M25
- Turnstile area perfect for paid attendance
- Outdoor power and water supply
- Toilet blocks throughout the site
- Catering units and facilities





## CATERING

With a resident head chef on site, we pride ourselves on putting together a beautiful menu that suits your tastes, budgets and any dietary requirements.

We have a number of catering packages available and a number of dining options to choose from. Whether it's simply tea, coffee and biscuits, a finger or hot fork buffet, or a full blown 3 course dining experience, we can accommodate any requirement.

Please contact our team for extensive catering packages available.

## EVENT PLANNING

We have a professional team of events managers and coordinators who are experienced in delivering all types of events from meetings of 20 to large music festivals.

Right from your initial enquiry, we guarantee the smooth running of any event.



## CONTACT US

Please contact our friendly team to discuss your event and allow us to answer any questions you may have.

01273 603 580

[events@brighton-racecourse.co.uk](mailto:events@brighton-racecourse.co.uk)

[brighton-racecourse.co.uk](http://brighton-racecourse.co.uk)

## KEEP UP-TO-DATE

By following us on social media...



BrightonRace



BrightonRacecourse





